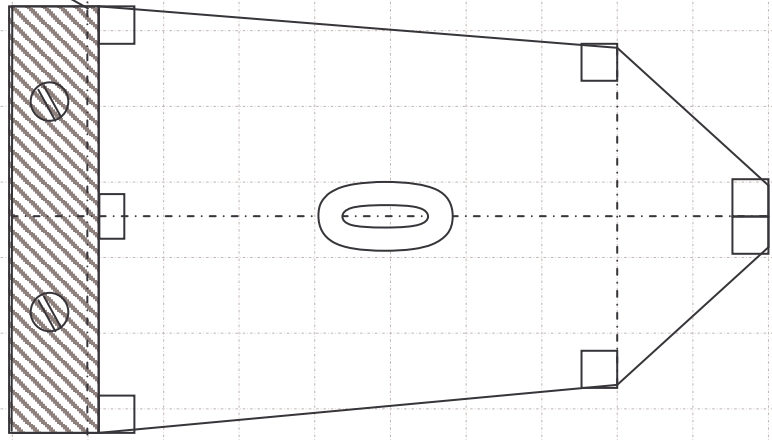
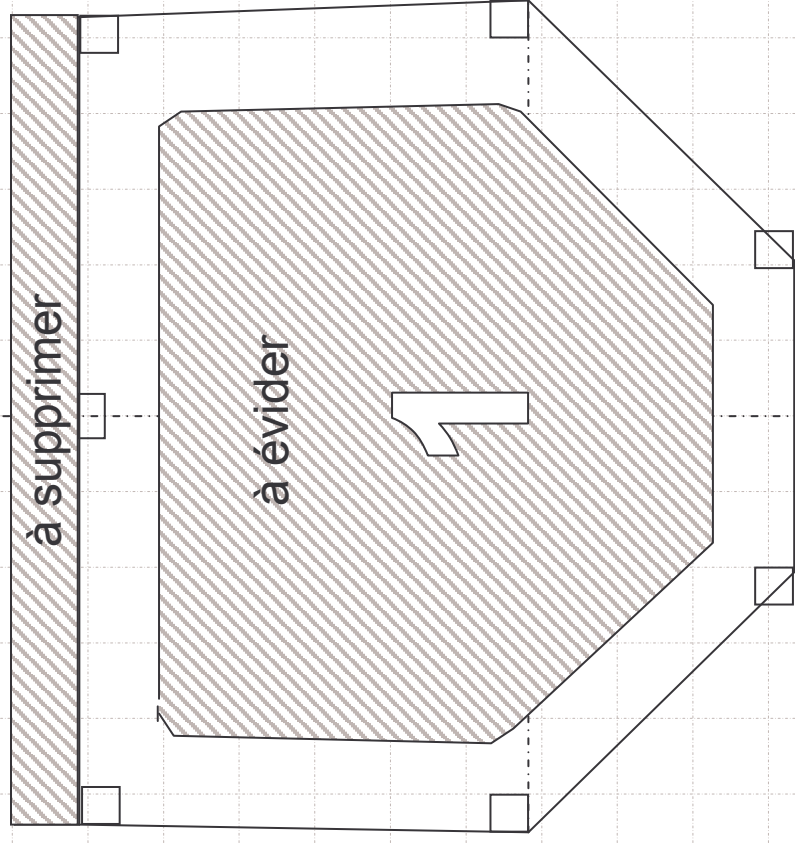
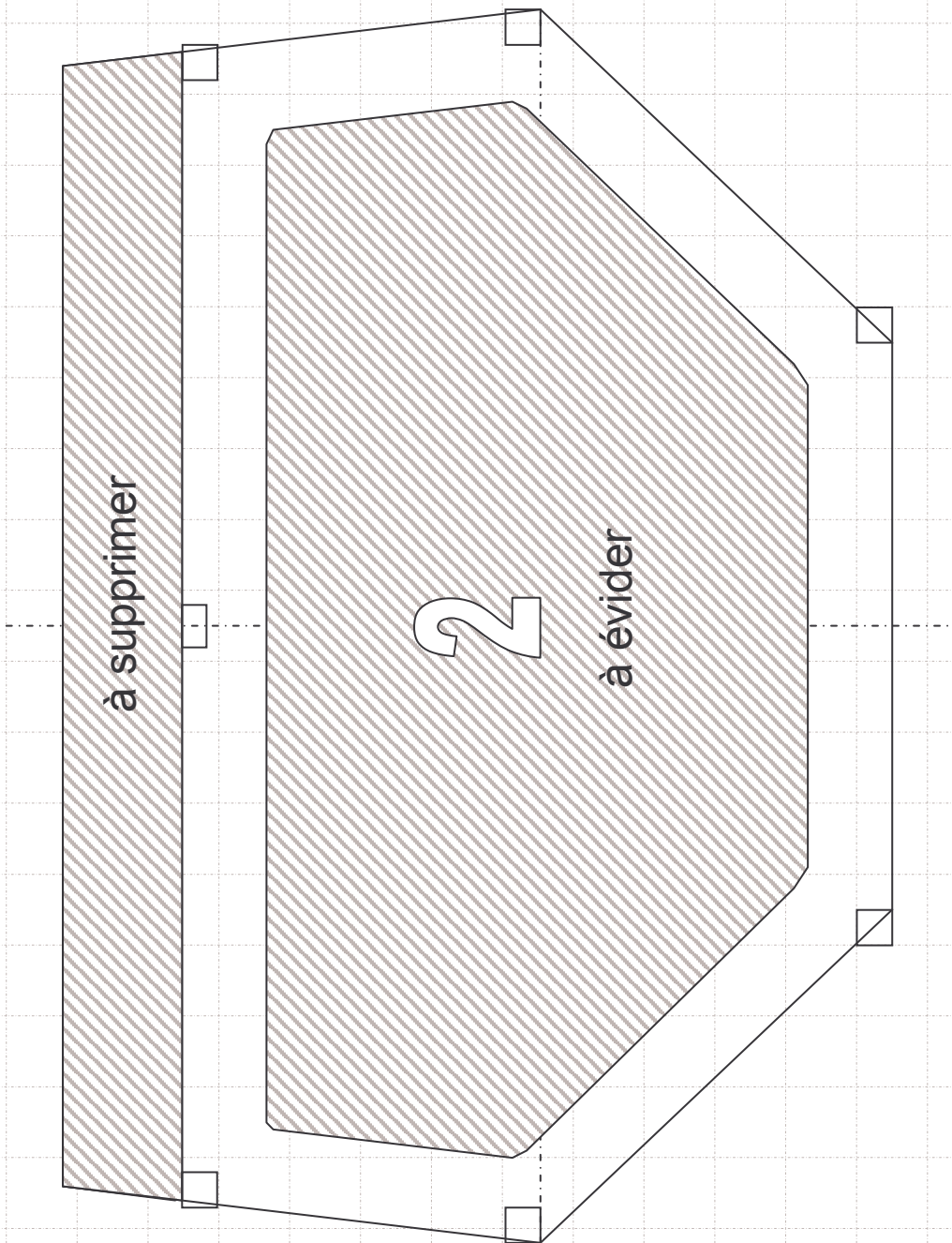
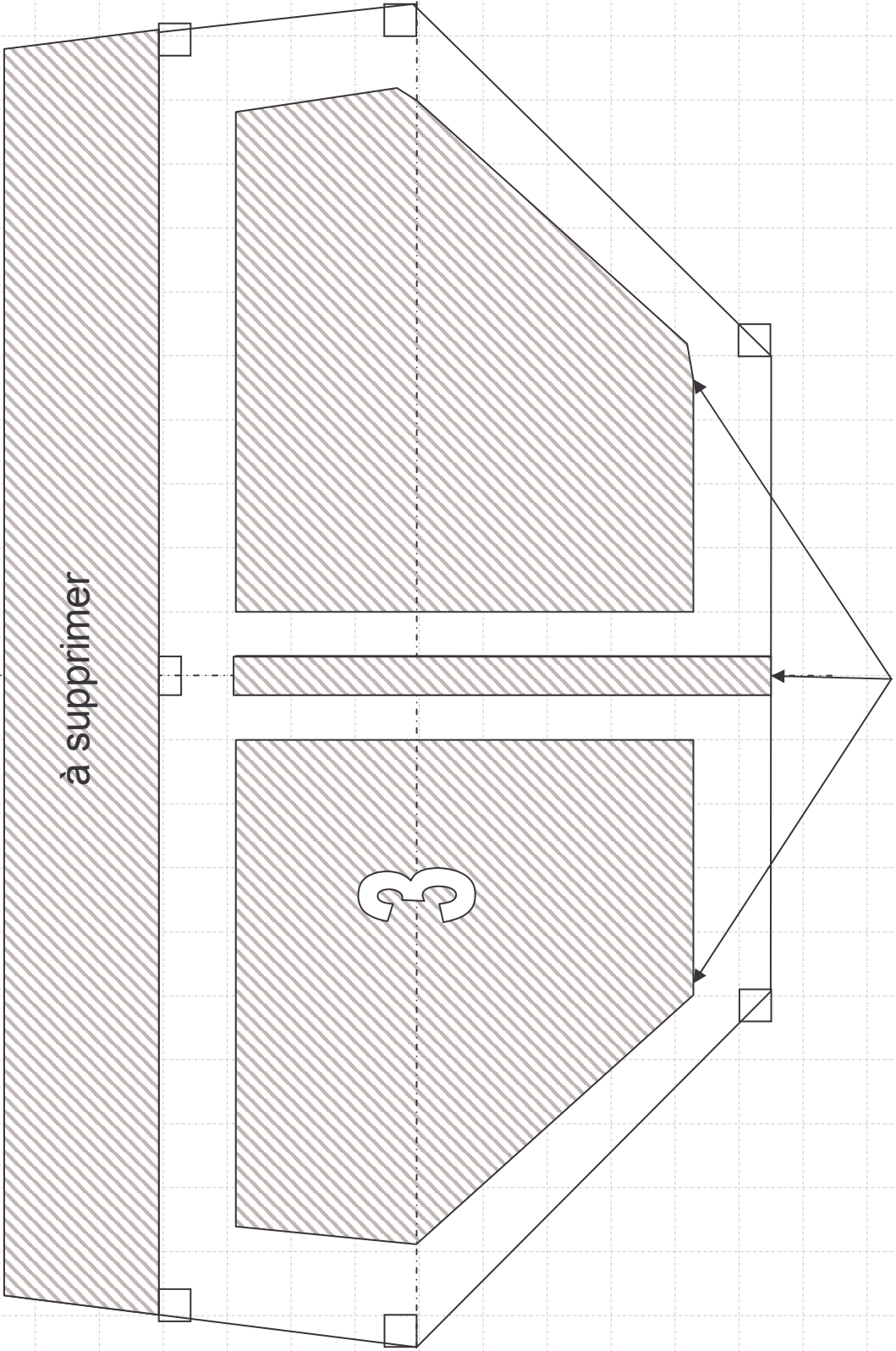


Niveau de base du chantier



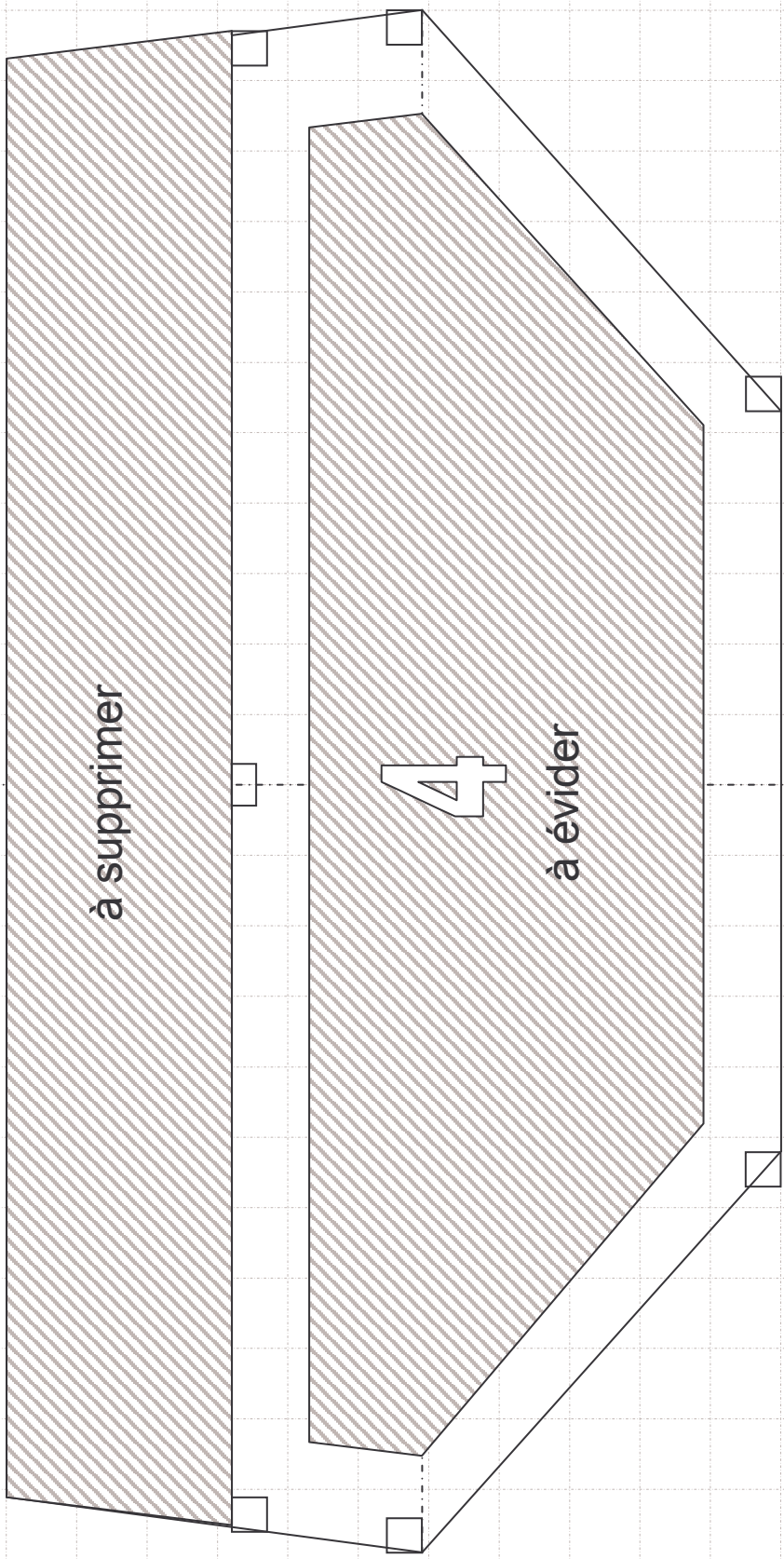




à supprimer

à éviter

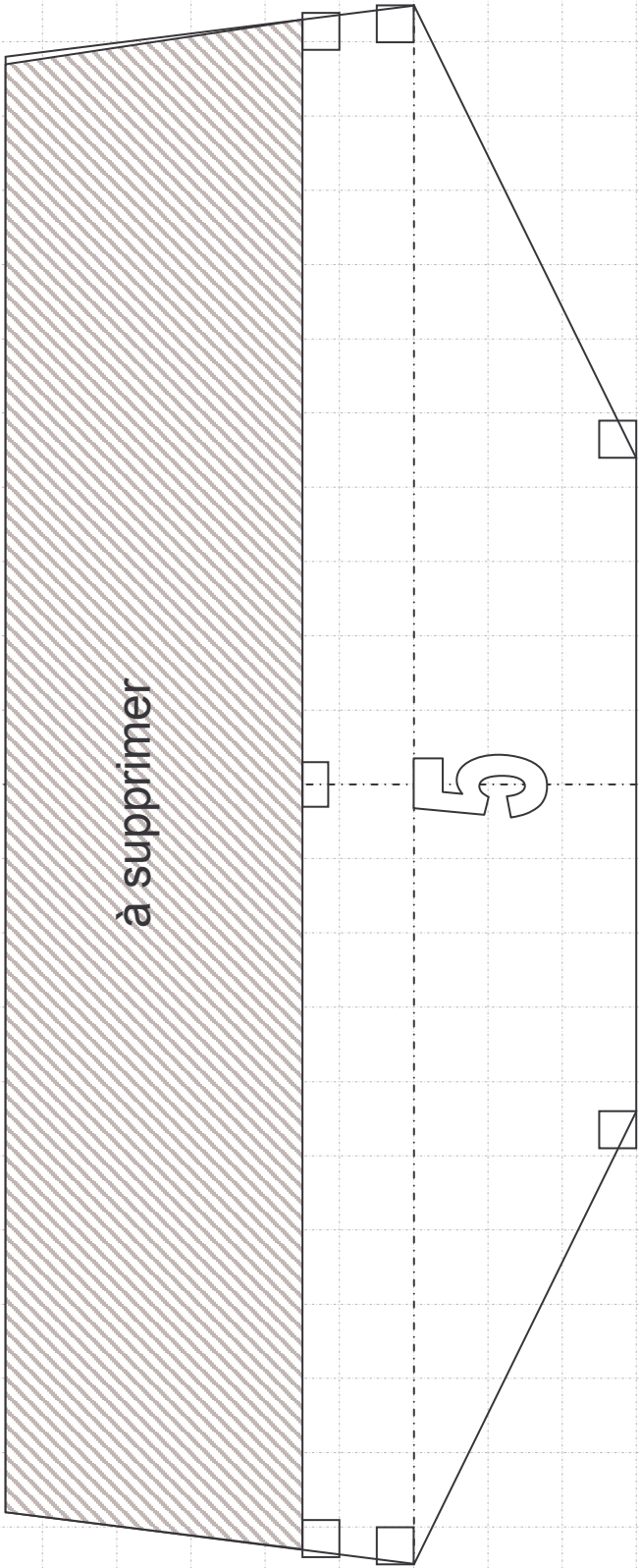
3



à supprimer

4

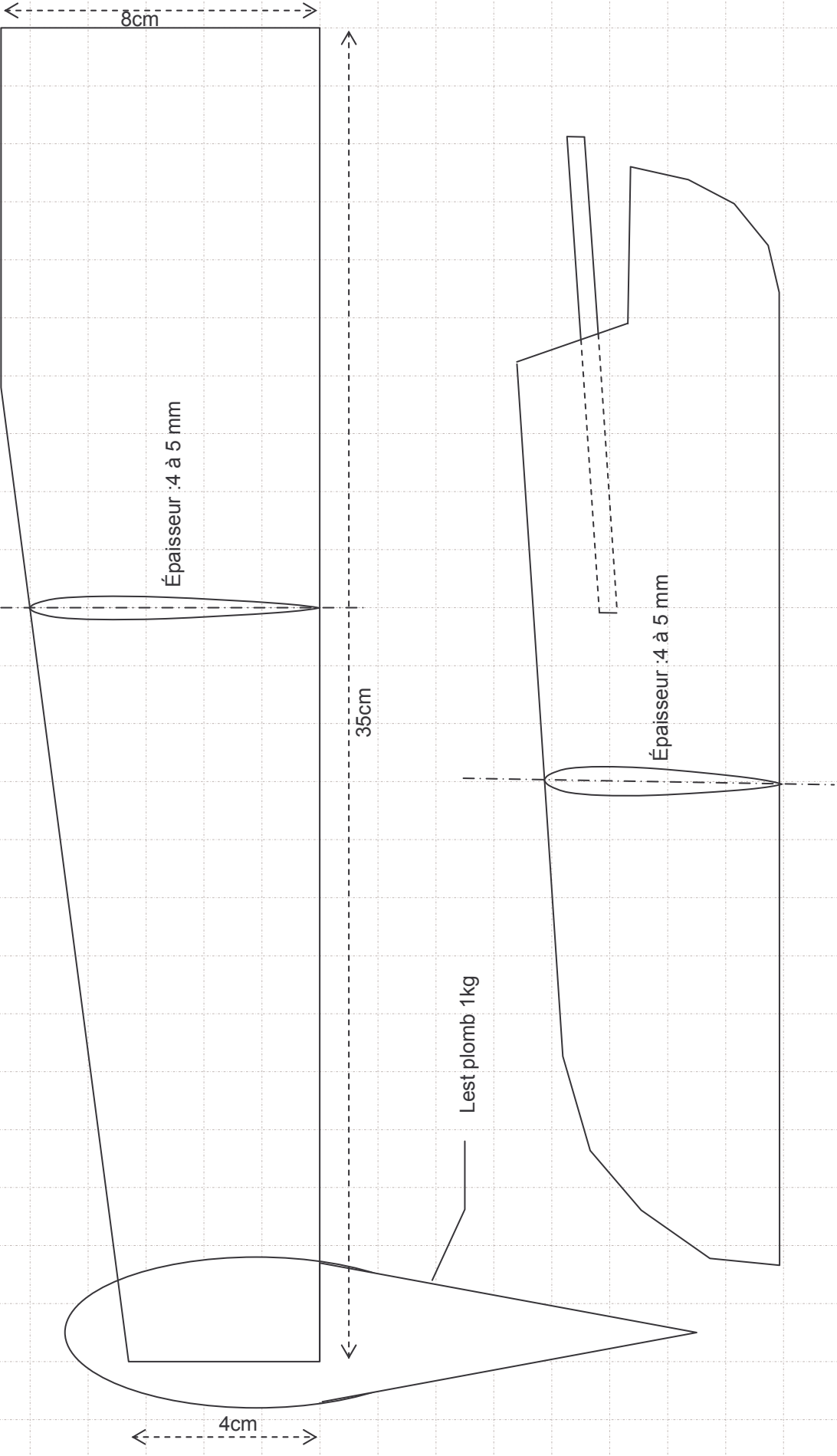
à évider



à supprimer

5

Dérive (échelle réduite) et safran :



Exemples de plans de voilure :

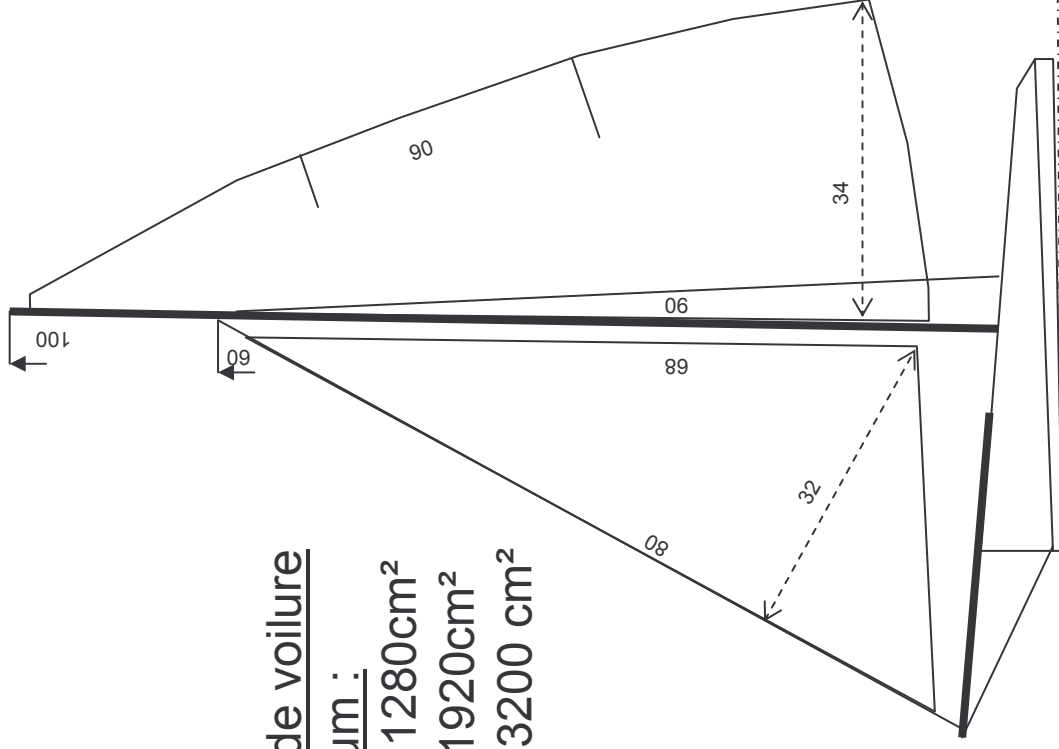
Plan de voilure

médium :

Foc : 1280cm²

GV : 1920cm²

SV = 3200 cm²



Plan de voilure

gros temps :

Foc : 1000cm²

GV : 1120 cm²

SV = 2120 cm²

